

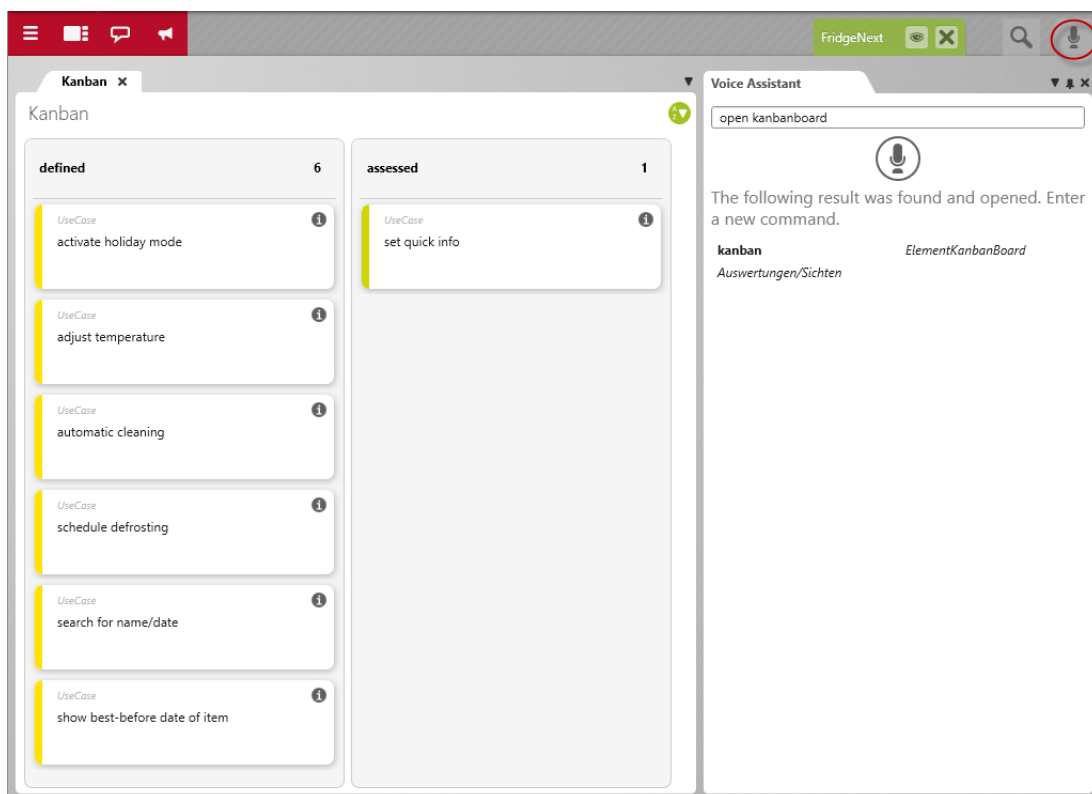
Changelog *objectiF* RPM 7.5

This changelog describes the new features, substantial changes, and corrections that have been made available with version 7.5 of ***objectiF* RPM**.

If you would like to be regularly informed of all changes, then subscribe to our newsletter at <https://www.microtool.de/en/newsletter-signup/>.

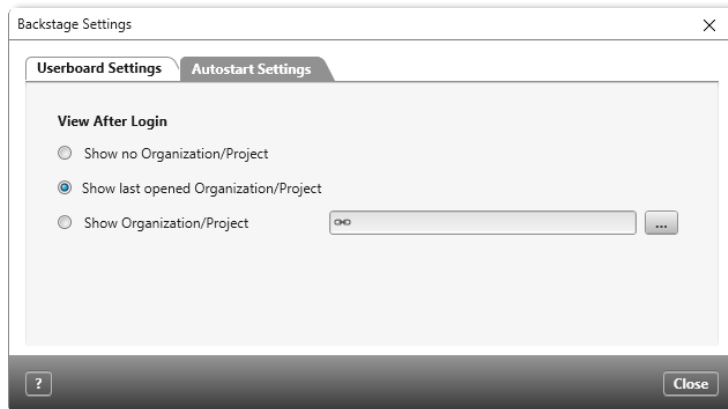
1 New Functions

- **Voice assistant for opening queries and views:** With version 7.5 you can open queries, views and diagrams with our brand-new voice assistant. For more information on how to set up the voice assistant, a separate document is available upon request.

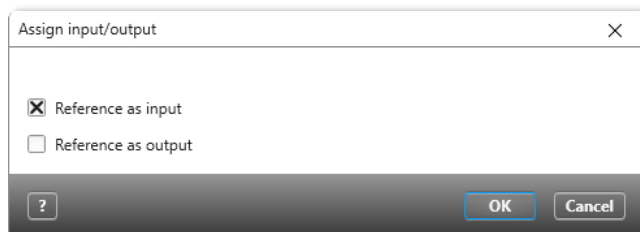


- **Navigate through dialogs with Tab button:** Navigating through dialog fields with the Tab button has been upgraded to work for more fields.
- **Messenger – Messages with line breaks:** To insert a line break in a message sent through the Chat function, press **CTRL + Enter**.
- **Use "Go to" between different projects:** If elements from other projects are referenced in dialogs and formulas, they now have the context menu command **Go to Definition**, which will take you to the corresponding project.

- **Cross-project commands:** The context menu commands for getting and viewing files are now available for files from different projects.
- **Autostart Settings:** In the dialog for **Backstage Settings**, users can now configure for a specific project/organization or the last opened project/organization to be displayed upon login.



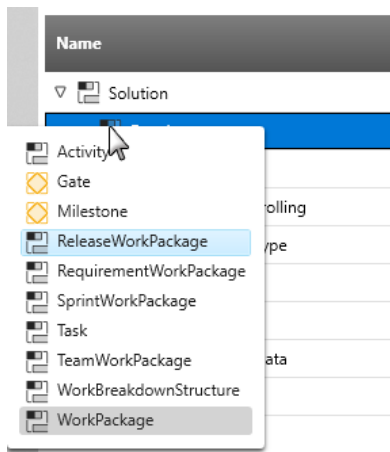
- **Assign files as input and output products through drag & drop:** When dragging & dropping files onto activities, you can now specify in the dialog that subsequently appears whether a file should be assigned as an input or output product. This action is also supported in views for activities.



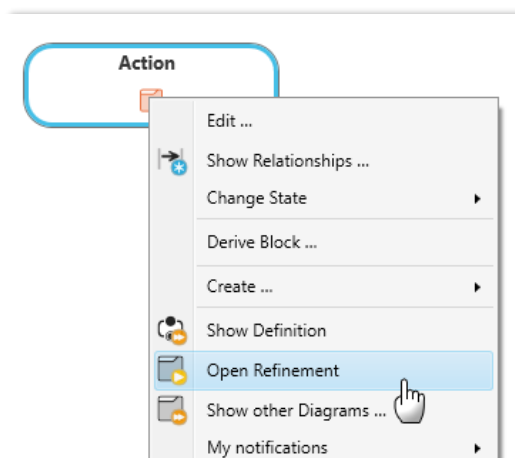
- **Create diagrams through commands:** It's now possible to create all diagram types for elements through the commands available in the topic bar.
- **Command to show view:** In a project, you can define the commands for opening the views from **Staff Management**, **Staff Calendar** and **Project Calendar**.
- **Project plan – Extended option for “Inline creation of activities enabled”:** If you have selected the option for **Inline creation of activities enabled** for *Project plans* and *Activity plans*, a button will appear for the uppermost activity in each section allowing you to directly create new sub-activities for the selected section. The button, however, doesn't appear automatically; you will first need to click on the desired activity to activate the option.

Name	Start
▼ Solution	21/07/20
Develop strategy	21/07/20
Strategy	15/09/20

- **“Database CleanUp” available:** With the new version of **objectiF RPM**, you now have access to the database cleaning tool **Database CleanUp**. With this, you can permanently delete projects and project revisions from databases.
- **Service Manager – Multi-client licensing:** In the Service Manager, you can specify a maximum number of floating licences and named user licenses to be made available for a given service address.
- **Gantt Chart – Change stereotype:** In views for an *Activity plan* or a *Project plan*, change the stereotype of activity simply by clicking on its icon.



- **New path for log data:** The storage structure for the client’s log files has been adjusted to provide a better overview of products and versions, as well as to avoid log files containing the entries of different product versions. The updated path is `C:\Users\max.mustermann\AppData\Local\microTOOL\objectiF RPM\Logs\` and concerns the log files for the Client, Service Manager and Database Upgrader.
- **Refine action – Open diagram:** If you have refined an action in an activity diagram, you can now open the corresponding diagram by selecting the command in the action’s context menu.



- **Save dialog:** Press **CTRL + S** to save any changes made to a dialog.
- **Warning message when change of state not properly executed:** If you trigger an event in the editing dialog of an element and it can’t be carried out, you will now receive a message in the

Output window warning you that the event couldn't be carried out because of a specific condition not being met.

- **Newsfeed:** With the Newsfeed feature, you now have quicker and easier access to notifications concerning product information and regular updates about microTOOL releases and events. The Newsfeed can be enabled for the entire system. Users can configure whether or not they wish to receive notifications through the Newsfeed in the notification settings.

2 Improvements

- **Create activity diagram:** You can now create activity diagrams directly through a package's context menu. A *ModelActivity* of the same name is created simultaneously.
- **Working in diagrams:** The editing functions available in diagrams have been improved. For example, you can now open the editing dialog of a diagram element by doubling-clicking it. You can also change the name of an element without having to open the editing dialog by clicking once on the element and then pressing **F2**.
- **Export queries:** When exporting queries, you now have the option to choose between exporting them in PDF or XML format.
- **Improved notification for Graph API:** There have been improvements made to the error message displayed for Graph APIs.
- **Reworking of Jira interface:** With a revamped Jira interface, it's now possible to map from stereotypes, properties, enumerated values and states. Additionally, attachments can be synchronized and requirements that are to be synchronized can be filtered according to query and filter settings.
- **Optimized full-text search:** The full-text search is now quicker than ever, which is especially helpful when searching for test cases and their multiple test steps.
- **Gantt charts – Upgrades for displaying and comparing staff initials:** When viewing or comparing revisions from project plans, the initials from staff members are now also displayed, provided that they have been inserted.
- **Gantt charts – Filtered entries:** If you are using a filter on a Gantt chart, it's now the case that the first 100 entries are shown. Previously, entries were only offered if there was a maximum of 20 different values.
- **Optimized performance within project plans:** The new version brings a number of improvements regarding project plans. This is especially the case when it comes to project calculations, identifying critical paths and loading activities, as well as the overall presentation and layout of project plans.
- **Element history:** With the new version, there is a quicker load time for element histories.
- **Delete topic group:** When editing the topic bar, a prompt now appears when deleting topic groups that the group will be deleted for all staff members.

3 Bug Fixes

- **Milestones - Start date:** The start date from milestones is now displayed in the latter's editing dialog.
- **Showing diagrams on the dashboard:** It was previously the case that diagrams to which some users didn't have access rights to were displayed on the dashboard. This has been fixed.
- **Copying external files:** When copying an external file into a directory and the external file in question had the same name as a file already present in the same directory, it would automatically be given a new and cryptic name. This is no longer the case.
- **Opening and closing forms:** The opening and closing of forms have been optimized.
- **Transferring functional scopes:** In the past, when transferring functional scopes from project templates and the creation of new projects, the user-defined settings for the functional scopes were not transferred along with them. This has been corrected.
- **Collapsed graphic areas in project plans:** It's now the case that the vertical scroll bar is still displayed, even when the graphic area has been collapsed.
- **Creating calendar files:** It's now possible to create calendar files with attachments, even if the file has been assigned as an input or output for an activity.
- **Importing from active directories:** When importing users from active directories, the filter now works properly.
- **State evaluation – Nested project groups:** Now, nested project groups are also considered when defining a state evaluation for a project group membership.
- **Displaying Boolean values in queries:** Boolean values in queries are now displayed in Checkbox form.
- **Displaying project members in views:** In the view for *Activities with Requirements*, the column for project members was previously not displayed. This has been fixed.
- **User-defined properties for form designer:** In the form designer, user-defined properties for formatted text are now shown in the drop-down menu for the given control element, rather than having to be typed in manually.
- **Queries- showing project status:** Now, when exporting queries that display the project status, the correct value is shown.
- **Deleting projects which are the context element in queries:** It's now possible to delete projects, even if they have been assigned as the context element of a hierarchical query.
- **Deleting projects with state machines:** It was previously the case that projects with state machines could only be deleted if the state machine was deleted beforehand. This is no longer the case.
- **Mailbox – Access via Exchange:** If the mailbox in **objectiF RPM** has been configured for it, attachments can now be downloaded, even if the mail access has been configured for Exchange.
- **Filtering in queries:** It's again now possible to filter values in the column for staff members.

- **Assigning inputs and outputs from patterns:** From now on, it's no longer possible to assign inputs or outputs to patterns if they have already been assigned to another pattern.
- **Collapsed topic bar:** It's no longer the case that topic groups are randomly deleted when topic groups are collapsed.
- **Filtering in project plans:** When filtering project plans, the correct elements for collective activities are now displayed if all subordinate activities have been filtered through.
- **Dashboard – Displaying charts and indicators for subordinate stereotypes:** When viewed on a dashboard, charts of the type **Elements by state** and indicators of the **Performance by stereotype** kind, will now be correctly evaluated if the stereotype in question is a sub-stereotype.
- **Renaming stereotypes:** When renaming stereotypes, it could transpire that stereotypes with the same name would also be created. The validation process had now been adapted so that this is no longer possible.
- **Deriving requirements from packages with sub-packages:** Deriving requirements from a package with sub-packages now functions correctly if it has been specified that sub-packages in the target package should also be created.
- **References in forms for revisions:** If forms use the control element *Reference*, the command **Go to [Revisions]** now works correctly.
- **Project plan – Displaying formatted text:** It was previously the case that project plans would display formatted text vertically centred. Now, the first row is also displayed.
- **Exporting project plans:** In some circumstances, it could happen that when generating project plans as PDFs or PowerPoint presentations, a longer period was exported than specified. This has been rectified.
- **Importing public holidays:** Public holidays imported into staff calendars are now automatically displayed as time off for staff members.
- **Project plan- Displaying enumerated properties:** In project plans, user-defined enumerated properties are now aligned to the left.
- **Improved performance:** Opening the view for **Activities with staff assignment** as well as the history of activities is much improved.
- **Output messages:** If a project or organization couldn't be deleted, a message wasn't automatically displayed in the output. This has been fixed.
- **Staff notifications:** Previously, when staff were notified about actions taking place in the state machine, whereby a recursive transition to "AnyState" occurred, "AnyState" would be given as the current state. This has been fixed so that the true state is now displayed.
- **Creating a pattern with a hierarchical query:** When applying patterns, hierarchical queries defined at the highest level are now also created.
- **Notifying users:** Under certain circumstances, assigned users were not notified if the navigation path in the action was configured via custom artefacts or via artefact relationships and subsequent references. This has been fixed.
- **Share topic groups for specific project groups:** If the topic groups are configured for specific project groups in the topic bar, the topic group is also shared with the users who belong to nested, subordinate project groups.

- **Deleting projects and organizations:** It's no longer possible to delete projects and organizations with the *Delete* button.

4 Bug Fixes for Web Client

- **Displaying *Hyperlink* properties:** Sometimes, when using the web client, user-defined properties of the *Hyperlink* kind were automatically displayed with the prefix *file://*. This has been fixed.
- **Configuring summary mails:** It's now possible to also configure dashboard evaluations during the configuration of the notification settings for summary mails.
- **Requirements diagram- Creating regions:** It's now possible to create regions within requirements diagrams.

5 Support

Still got questions? Then call our support team or write to us at:

microTOOL GmbH

Software Methoden Training
Voltastr. 5
D-13355 Berlin

Tel. +49 (30) 467086-20
Fax +49 (30) 4644714
E-Mail service@microtool.de

Wishing you all the best for your work with **objectiF RPM!**

objectiF RPM and microTOOL, making IT better are registered trademarks of microTOOL GmbH.

© 2022 microTOOL GmbH, Berlin. All rights reserved.